



▶ FALL INTO OUR LATEST WW&W ARTICLE, AND LEARN HOW LIGHT MAKES THE AUTUMN LEAVES CHANGE COLOR2



▶ THE CITY OF BROTHERLY LOVE HOSTS "LIGHTING FOR THE WELL-ENTERED ENVIRONMENT" EDUCATION CLASS.....3



▶ IES AND DLF PARTNER UP FOR ANOTHER SUCCESSFUL EVENT; THIS TIME AT THE DENVER ART MUSEUM4

NOVEMBER 2006

Rocky Mountain Monthly

IESNA ROCKY MOUNTAIN SECTION

WWW.IESRMS.ORG

Improve Lighting Quality and Save Money

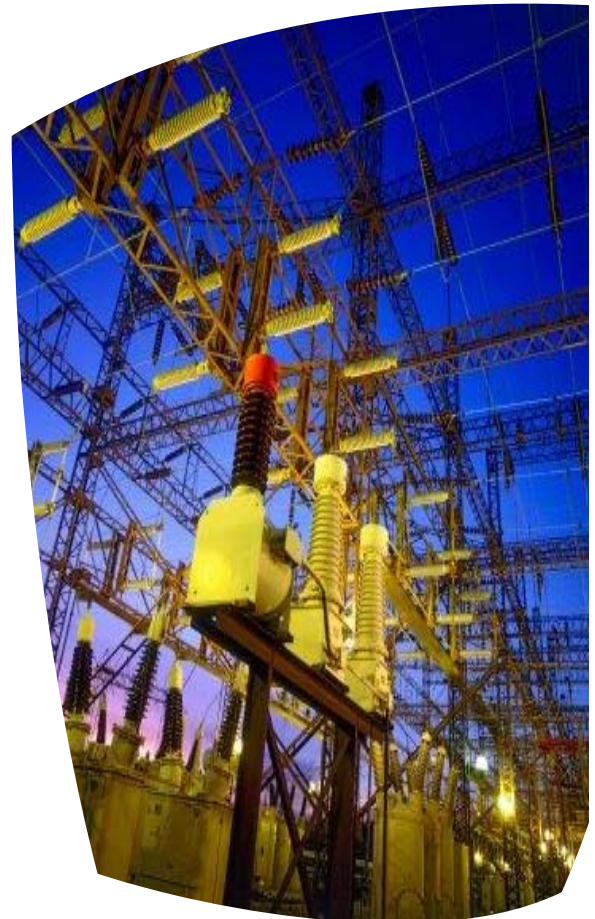
For most businesses, lighting is a main driver of energy bills, accounting for up to 44 percent of monthly energy costs. Every step to lower your lighting use, from installing energy-efficient lighting to limiting lights to where and when you need them, can significantly lower your energy bills and earn substantial rebates.

The Energy Policy Act of 2005 (EPAct 2005) contains a significant new tax deduction to foster investment in energy-efficient commercial buildings as defined in ASHRAE/IESNA 90.1-2001. This can result in significantly lower total project costs of both new

construction and retrofit application for the end user as well as incremental energy savings. We will discuss the ramifications as related to lighting.

Join us as an Xcel Energy representative joins us to talk about how you can design and install with savings in mind!

Immediately following the Xcel presentation, Jim Blakley from Holophane Lighting will present savings options associated with EPAct 2005 and how to use it to benefit your designs!



Register for this meeting right now!



Click here to be automatically directed to the registration website.

XCEL REBATES MEETING DETAILS

Date: Wednesday, November 8, 2006

Location: Original Brooklyn's

Time: 5:30pm

Cost: \$15 Members
\$25 Non-Members
\$5 Students

DIRECTIONS?

CLICK HERE



Deadline for RSVP is Tuesday, November 7

Wisdom,

Wonders,

and

Wit



Every autumn we revel in the beauty of the fall colors. The mixture of red, purple, orange and yellow is the result of chemical processes that take place in the tree as the seasons change from summer to winter.

During the spring and summer the leaves have served as factories where most of the foods necessary for the tree's growth are manufactured. This food-making process takes place in the leaf in numerous cells containing chlorophyll, which gives the leaf its green color. This extraordinary chemical absorbs from sunlight the energy that is used in transforming carbon dioxide and water to carbohydrates, such as sugars and starch.



But in the fall, because of changes in the length of daylight and changes in temperature, the leaves stop their food-making process. The chlorophyll breaks down, the green color disappears, and the yellow to orange colors become visible and give the leaves part of their fall splendor.

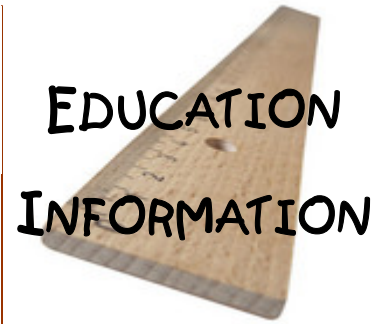
The autumn foliage of some trees show only yellow colors. Others, like many oaks, display mostly browns. All these colors are due to the mixing of varying amounts of chlorophyll residue and other pigments in the leaf during the fall season.

Light, temperature, and water supply have an influence on the degree and the duration of fall color. Low temperatures above freezing will favor bright reds in maples. However, early frost will weaken the brilliant red color. Rainy and/or overcast days tend to increase the intensity of fall colors. The best time to enjoy autumn color would be on a clear, dry, and cool (not freezing) day.

Enjoy the color! It only occurs for a brief time each fall!



Text prepared by Carl E. Palm, Jr., Instructional Support Specialist, Faculty of Environmental and Forest Biology, SUNY-ESF



INTERMEDIATE LIGHTING (ED-150)

It's not too late to register for a drop-in class! Here's what's on the schedule this month...

November 2

Daylighting

November 4

Building Electrical Systems

November 9

Codes & Ordinances

November 16

Health & Sustainability

November 18

Lighting Controls

COURSE DETAILS

Dates:

Nov. 2, 4, 9, 16, 18

Times:

Thursdays (6:30p-9:30p)
Saturdays (8:30a-11:30a)

Cost:

(includes copy of text and one class)

\$ 75 Non-Members
\$ 60 Members

Click here to register now!

[Register Online NOW!](#)

For more information e-mail David Keith, Education Chair, at educate@iesrms.org.

Rio Grande Section

The Rocky Mountain section profiles... Rio Grande section (Southwest Region)

The Rio Grande section of the IESNA covers the state of New Mexico.

New Mexico is one of the fastest growing markets in the country. All indications show that there will be rapid growth for at least the next 10 years in commercial construction, residential construction and population.

The Rio Grande section hosted its first ever Lighting Product Showcase in March, 2006.

The showcase featured manufacturer's product demonstrations, as well as IES University, which allowed for further your professional education!

Featured topics included: *LEARNING & LIGHTING: Lighting for Educational Facilities; Daylighting and LEED Buildings; Educational Lighting; Historical Renovations & The Top 100 Lighting Applications.*



[Click here to visit the Rio Grande section website!](#)

IES

3 WAYS TO LOWER YOUR LIGHTING COSTS AND EARN REBATES

LIGHTING RETROFIT

Available for existing facilities of any size, our one-to-one retrofit rebates help offset the cost of installing new lighting that's more efficient than your current lighting.

NEW CONSTRUCTION LIGHTING

Available for new facilities or those going through major renovations, we reward you for choosing lighting options that are more efficient than standard-efficiency options.

CUSTOM EFFICIENCY LIGHTING

Custom Efficiency lighting rebates are available for energy-saving lighting projects not currently included in our prescriptive Lighting Efficiency rebate program. This rebate requires pre-approval before equipment purchase and installation. Save now!

WEB LINK

Click the link to go right to the site!

www.XCELENERGY.com

As a leading combination electricity and natural gas energy company, we offer a comprehensive portfolio of energy-related products and services to 3.3 million electricity customers and 1.8 million natural gas customers.

www.JETS.org

America's leading non-profit educational organization opening the world of engineering and technology to students, parents, and educators through academic programs, career exploration materials, and online resources.

www.NLB.org

The National Lighting Bureau (NLB) is a nonprofit organization founded in 1976 to educate lighting decision-makers about the benefits of High-Benefit Lighting®.

www.iesanz.org

The IESANZ is the sister organization to the IESNA in Australia and New Zealand, working to promote the advancement of lighting in the region through education, research and demonstration.

Philadelphia hosts Education Session

The Role of Lighting in a Wellness-Centered Environment

The Electrical Association of Philadelphia

Led by Craig A. Bernecker, Ph.D., FIES, LC, Lighting for healthcare facilities must address a wide variety of criteria in order to meet both the needs of the patient and the healthcare worker.

This one-day immersion class addresses these issues in a comprehensive fashion using the Illuminating Engineering Society (IESNA)/American National Standard Institute's (ANSI) new Recommended Practice for Lighting for Hospitals and Health Care Facilities (RP-29-05), and Healthcare Facility "Design Guides," introduced in the 2000 IESNA Lighting Handbook, as a framework.

Intended for architects, engineers, lighting designers, healthcare facility managers, interior designers, manufacturers' representatives, distributors, and others interested in lighting for health and healthcare facilities.

Registration generally limited to 30 participants. All classes qualify for CEU's.

Visit lightingeducation.com for a registration form.

Lighting Education Institute
409 Rennard Drive
Exton, Pennsylvania 19341

Voice: 610.524.7969
Fax: 610.524.8969

Xcel Energy Rebates

Original Brooklyn's

November 8
Xcel
ENERGY

Join us as an Xcel Energy host speaks about energy rebates available now and in the future!

2006-2007 Upcoming Section Events

Light and Health in the 21st Century

Original Brooklyn's

January 12

An abbreviated presentation of David Keith's acclaimed workshop from the 2006 Southwest Regional Conference.

IIDA "How To" Workshop

Original Brooklyn's

December 12

Regional IIDA Chair Leo Mendoza gives you tips and tricks to you're your IIDA submission a winner!

ED-150 Intermediate Class

Corelite

September thru November

Thursdays (6:30p-9:30p)
Saturdays (8:30a-11:30a)

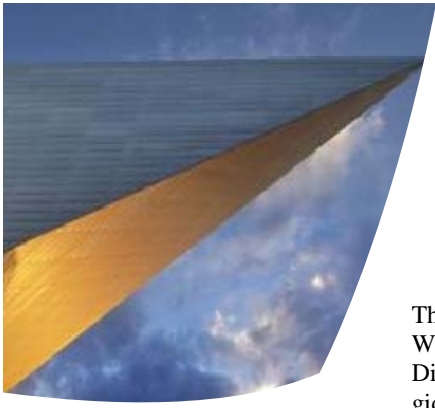
Sept. 21, 23, 28
Oct. 5, 7, 12, 19, 21, 26
Nov. 2, 4, 9, 16, 18

LED Technology

Original Brooklyn's

February 13

Our springtime mini-expo, we'll have manufacturers available for hands-on demonstrations and a short lecture on solid state technology.



DAM Tour draws more than 100

IES and DLF members, friends, and relatives gather for private tours of the acclaimed Hamilton Building Expansion at the Denver Art Museum

The Denver Art Museum's 35-hour celebration marking the opening of its \$90.5 million addition drew a total of 33,755 people - an average of nearly 1,000 visitors an hour.

"We are absolutely thrilled with the success of the museum's grand opening celebration," director Lewis Sharp said. "The number exceeded our expectations."

The project "overwhelmed" Westminster painter Jasmine Dillingham, 29. "I feel giddy," she said while standing alone in a small room dominated by ceramic, slug-like shapes attached to a slanting wall.

"There are so many famous artists' work here. I can see the actual brush strokes." Saturday's opening-day crowds heartened her, she said. "This many people show up for a football game, but for culture and art? It makes me happy for the world."

On October 18, more than 125 IES and DLF members, friends, and relatives gathered at Pint's Pub, just west of the museum for dinner. Then, immediately following, were given presentations by speakers from Davis-Partnership Architects and MKK Consulting Engineers. Guests stayed at the museum until its closing at 10:00pm.

David Beldus, 73, drove down from Estes Park for the event because "this is special. Art is culture," said the retired teacher. "It tells us about magnificent abilities of people to represent themselves and others."

Tickets can be purchased in person at the museum or by calling 866-409-0278 or visiting denverartmuseum.org.



STUDENT SPONSORSHIP OPPORTUNITY

More and more students are joining our section meetings each month! We couldn't be more excited, and we would like to encourage even more to join us.

The Rocky Mountain Section is currently looking for a sponsor to help offset the students' expense. Currently, we are looking for a \$250 contribution (fully tax-deductible) from an organization interested in encouraging student involvement. This will provide all students in our section the opportunity to attend section meetings at NO COST!



The new STUDENT SPONSOR would receive monthly recognition in our newsletter (including a profile article) and at our section meetings, as well as at our special events (such as the golf tournament).

If you are interested in this or other sponsorship opportunities in our section for the 2007 spring and summer season, please send an e-mail to info@iesrms.org.



Section Officers

President Marla Stauth
Vice President Jim Blakley
Secretary Tyler Wise
& Treasurer

Board of Managers

Awards Chairman Scott Payne
Educational Chairman David Keith
IIDA Awards Chairman Leo Mendoza
Membership Chairman Mike Rogers
Electronic Communications Val Lawrence

