



▶ IIDA SECTION CHAIR LEO MENDOZA GETS YOU UP TO DATE FOR 2007-2008 IIDA DESIGN SHOWCASE 3



▶ OUR NEW MONTHLY COLUMNIST SCOTT PAYNE EXPLORES LIGHTING SOURCES THROUGH THE AGES.....4



▶ WANT TO KNOW MORE ABOUT YOUR 12:00 FLASHING VCR? HERE WE EXPLAIN VCD DISPLAYS2

OCTOBER 2007

Rocky Mountain Monthly

IESNA ROCKY MOUNTAIN SECTION

WWW.IESRMS.ORG

GREEN DESIGN

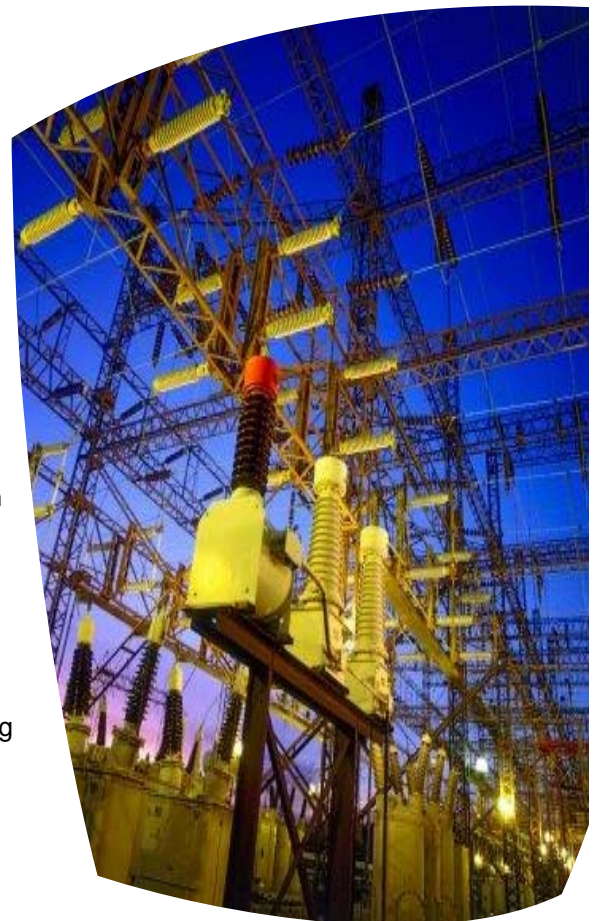
HOW TO SQUEEZE SOME CASH FROM YOUR "GREEN DESIGNS"

For most businesses, lighting is a main driver of energy bills, accounting for up to 44 percent of monthly energy costs. Every step to lower your lighting use, from installing energy-efficient lighting to limiting lights to where and when you need them, can significantly lower your energy bills and earn substantial rebates.

Join us this month as we invite several power utility company speakers to discuss their energy rebate programs and how you can best utilize these money-saving

opportunities on your designs and projects.

Also, discover how you can use the 2005 Energy Policy Act (EPAAct) to earn federal tax incentives for your building owners and your own design firm. This portion of the program will highlight the structure of the 2005 EPAAct and will help get you started on bringing in some financial reward for providing energy conserving designs. Our own Mike Rogers discusses EPAAct and its impact on your day-to-day work.



REBATES & EPAAct MEETING DETAILS

Register for this meeting right now!



Click here to be automatically directed to the registration website.

Date: Tuesday, October 16, 2007

Location: Original Brooklyn's

Time: 5:30pm

Deadline for RSVP is Monday, October 15

Cost: \$22 Members
\$27 Non-Members
FREE Students

Students attend free thanks to...



DIRECTIONS?
CLICK HERE



Wisdom.

Wonders.

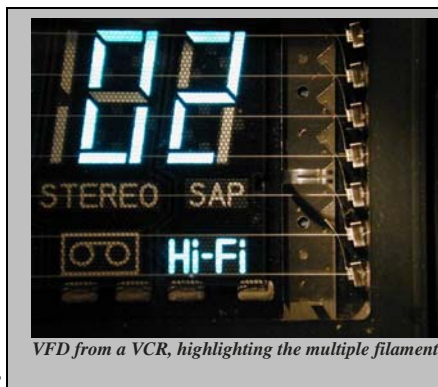
and

Wit



A vacuum fluorescent display (VFD) is a type of display used commonly on consumer electronics equipment such as video cassette recorders, car radios, and microwave ovens. Unlike liquid crystal displays, a VFD emits a very bright light with clear contrast and can easily support display elements of various colors. The technology is related to both the cathode ray tube and the nixie tube.

The principle of operation is identical to that of a vacuum tube triode. Electrons can only reach a given plate element if both the grid and the plate are at a positive potential with respect to the cathode. This allows the displays to be organized as multiplexed displays where the multiple grids and plates form a matrix, minimizing the number of signal pins required. In the example of the VCR display shown to the right, the grids are arranged so that only one digit is illuminated at a time. All of the similar plates in all of the digits are connected in parallel. One by one, the microprocessor driving the display enables a digit by placing a positive voltage on that digit's grid and then placing a positive voltage on the appropriate plates. Electrons flow through that digit's grid and strike those plates that are at a positive potential. The microprocessor cycles through illuminating the digits in this way at a rate high enough to create the illusion of all digits glowing at once.



From the mid 1980's onwards, VFD's were used for applications requiring smaller displays with high brightness specifications, though now the adoption of high-brightness OLED's is pushing VFD's out of these markets.

EDUCATION INFORMATION



INTERMEDIATE LIGHTING (ED-150)

This class is geared towards those individuals looking to go beyond the fundamentals of lighting. The new ED-150 course is designed as the next course for those who have already completed the ED-100 fundamentals program or have gained basic lighting knowledge in other educational programs.

Class instructors will present not only the "what" but also the "why". ED-150 is also an excellent part of an individual's preparation for taking the NCQLP examination.

COURSE DETAILS

Dates:

To Be Announced

Times:

Thursdays (6:30p-9:30p)
Saturdays (8:30a-11:30a)

Cost:

All Sessions

(includes full text and all classes)

\$550 Non-Members
\$450 Members
\$50 multi-student discount

Individual Classes

(includes copy of text and one class)

\$ 75 Non-Members
\$ 60 Members

We are currently determining the level of interest for this class. If you are interested in this session, or for more information e-mail Leora Radetsky, Education Chair, at leora@iesrms.org.

MEET SECTION MEMBER... Virva Nilson

interview by Nancy Johnson

Engaged for nearly 20 years in lighting design, Virva Kokkonen Nilson is a seasoned practitioner of her craft. To "craft" is to fashion with care. To Virva, this means giving due consideration to the people and places that the lighting technology is intended to serve. While she stays informed about technological advancements (such as attending the recent IESNA Lamp and Ballast Expo!), she is "cautious about codes, formulas, and lumens." Her approach to her profession is to seek out the opportunities to be creative and to develop a vision for the lighting that works seamlessly with the architecture. Has the "greening" of the built environment

changed how she works? "I have always practiced efficiency," she says. "It's about finding the right source for a specific task or purpose." Ban the incandescent? "Ridiculous," she states.

Virva came to the United States in 1989 from her home in Helsinki, Finland, where she had just about completed her graduate studies in Interior Architecture and Furniture Design. She landed in NYC, intent on learning about lighting and ended up getting her Masters Degree in Architectural Lighting from Parsons School of Design. Before starting her solo lighting design studio called Virvatuli Lighting Design, she worked in San Francisco for Auerbach + Glasow and then for Nancy

Clanton in Boulder. She is celebrating the 10th anniversary of her business in Boulder, serving largely the local hospitality and residential market.

What is her idea of an ideal project? "One with an unlimited budget," she says with a laugh. (I could hear the creative juices come to an immediate boil with that comment!) However, tight budgets are the norm, Virva admits, and she enjoys the challenge of diverse and creative design opportunities regardless. For Virva, lighting is about inspiration, her own and that of her clients. Robert Altman once said, "I have to be thrilled if I expect others to be thrilled." Meet Virva, and be assured that you will be thrilled by her lighting design.

A big thanks to our Lamp and Ballast presenters!

The Rocky Mountain section greatly appreciates the support of these presenters, who provided hands-on demonstrations as well as brief presentations on the latest in lamp and ballast technologies.



THANK YOU FOR YOUR SUPPORT!

! ATTENTION STUDENTS!

All students now attend IESRMS section meetings FREE!

Any student member of the IESNA is invited to attend at no charge, compliments of Lighting Analysts. Just show your student ID, and your admission and dinner is complimentary to all section meetings during the 2007-2008 season! Thanks to our sponsor, Lighting Analysts!



Who Won Over \$100 This Month?

Congratulations to our survey prize winner, David Roederer, who won \$50 in our random drawing for completing our online meeting topics survey!

Grant Stice with Fluorescent Maintenance won our door prize of a Mag-Lite Flashlight.

Mark Crawford of Voss Lighting won \$50 cash!

A Letter from the section IIDA Chair

Lighting Designers, it's time to think about your best work over the past year or so. Photograph it and submit for IIDA. IESNA members and nonmembers are eligible.

The deadline for entry is January 14, 2008.

Please see the last page of the nomination form, it's the judging sheet, this would give you a very good idea of what criteria judges will use to score the nominations.

Nomination forms are now available online at www.iesna.org. The following credit cards are now accepted: MasterCard, Visa, and American Express. Please remember each nomination has to be submitted separately; each with its own CD and narrative, each with its own nomination form and entry fee.

Submit nominations to: **IIDA c/o Leo Mendoza
Creative Illumination
1298 South Kalamath Street
Denver, Colorado 80223**

Please submit on time. IIDA nominations received after the deadline of January 14, 2008 will not be judged.



**WELCOME
NEW SECTION
MEMBERS**

Victor Olgay,
RMI ENSAR Built
Environment, Boulder

Utility Rebate Programs
Original Brooklyn's
October 16

Representatives from several energy companies in the Rocky Mountain region join us for a symposium discussion of their rebate and incentive programs.

**2007-2008
Upcoming
Section Events**

IES/DLF Stadium Tour
Invesco Field at Mile High
January TBD

Join us as we partner with DLF in a tour of one of Denver's great sports venues and discuss egress lighting, code compliance, sports lighting, and the VE process.

Lighting Ordinances
Original Brooklyn's
November 13

In November, join us as we meet with "code master" Mike Rogers to review and discuss Colorado Lighting Ordinances.

Holiday Lights Tour
Downtown Denver / Denver Zoo
December 11

Join us for a friends and family evening as we take a tour of the highlights of holiday lights around Downtown Denver and at the Denver Zoo's ZooLights!

LED Expo
Original Brooklyn's
February 12

This month we invite manufacturers to bring you the latest products and technologies in the LED industry along with demonstrations and discussions on the technology.

“Nothing New Under the Sun...”

The History of How Energy Sources Affect Lighting



solar panels at Southern California Edison Plant in Barstow, California

Changes in the world of lighting have often been driven by changes in the available energy source.

The first Solar Lamps were revolutionary, indeed. Solar Lamp technology was developed in response to dwindling supplies of energy for illumination. It was designed to utilize less desirable energy sources in an efficient manner.

The Solar Lamp used a new source of energy in response to increased cost of traditional fuel. The new source was abundant and far easier to “harvest” than that which had been used for illumination in the past. As new resources were discovered and developed, the solar lamp proved to be merely transitional technology and is now an obscure footnote in the history of lighting.

The patent for the Solar Lamp is dated 1843 and was held by Cornelius and Company, Philadelphia, Pennsylvania. It was designed to use coarse

fuels like pig lard. The Solar Lamp’s unique design allowed heat from the burning wick to liquefy the lard quickly. The melted fat would feed the flame of the draft lantern wick that burned inside a glass chimney. The light was, according to the manufacturers rep, as bright as the sun; hence the name.

The fuel in short supply at the time was whale oil. Whale oil had been the preferred fuel for light after dark for more than a hundred years. The fuel that overtook pig fat and whale oil was petroleum, discovered in Pennsylvania in the 1850’s.

Kerosene lamps became ubiquitous over the next half century until Mr. Edison made a bamboo split glow in a vacuum bottle.

Life is dangerous enough. We should be grateful for having been spared the hazards of high cholesterol lighting.



Article by contributing columnist Scott Payne, LC of ME Group

ENERGY

ESTES PARK | FORT COLLINS | LONGMONT | LOVELAND

If you’re planning a new lighting design, **energy efficiency starts now.**

Platte River Power Authority provides assistance to help maximize your building’s efficiency and minimize future energy costs.

Our cash incentives will help pay the initial costs of making your project energy efficient.

Contact us today.

970.229.5356 or lightenup@prpa.org

Adam Perry, LIGHTENUP Manager

www.prpa.org
2000 East Horseooth Rd., Fort Collins, CO 80525

PLATTE RIVER
POWER AUTHORITY

Congrats to our very own Marla Stauth of Frankly Lighting, LLC, for her feature in the September issue of LD+A magazine! Check her out on page 28, with her design of the 633 17th Street Plaza in Downtown Denver.



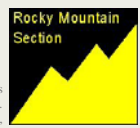
633 17th Street Plaza

Section Officers

- | | |
|----------------|---------------|
| President | Jim Blakley |
| Vice President | Tyler Wise |
| Secretary | Nancy Johnson |
| Treasurer | Val Lawrence |

Board of Managers

- | | |
|----------------------|--------------------------|
| Awards Chairman | Jeff Kramer |
| Educational Chairman | Leora Radetsky |
| IIDA Awards Chairman | Leo Mendoza |
| Membership Chairman | Mike Rogers |
| Past President | Marla Stauth |
| Committee Members | David Keith, Scott Payne |



Material in the Rocky Mountain Monthly is published in good faith from information received from various industry sources. Views expressed are not necessarily those of the IESNA or the Rocky Mountain section. We reserve the right to edit material sent to us for publication, due to space limitation. All content © 2007. Rocky Mountain section, IESNA, Getty Images and other approved sources.