



▶ DEADLINES AND INFORMATION YOU NEED FOR YOUR IIDA SUBMISSIONS3



▶ SNEEZING DUE TO BRIGHT LIGHT... YEAH, IT EVEN HAS A NAME!2



▶ HOLIDAY LIGHTS ARE STILL UP AND SHINING IN SOME PARTS OF THE DENVER AREA.....4

JANUARY 2008

Rocky Mountain Monthly

IESNA ROCKY MOUNTAIN SECTION

WWW.IESRMS.ORG

Facility Tour of the New Broomfield Event Center

The Broomfield Event Center is a 6,000-seat multi-purpose arena in the Denver suburb of Broomfield, Colorado. It opened with its first event on November 9, 2006 (a concert by Bonnie Raitt), and hosts professional sports games and exhibitions, concerts, conventions and other public events. It is home to the Rocky Mountain Rage ice hockey team of the Central Hockey League and the Colorado 14ers basketball team of the NBA D-League.

Join us as we partner with DLF to bring you inside the new Broomfield Event Center. With three rotating tours, we will explore sportslighting,

architectural lighting, and lighting controls of the latest sports venue in the Rocky Mountain region.

IMPORTANT NOTES

The date of this event is tentative, pending events being hosted by the Center. IES and DLF will notify all participants via e-mail of any changes to the tour.

There will be no food or drink provided as part of the tour.

For security purposes, pre-registration is required. On-site registration will not be provided for this tour.



BROOMFIELD EVENT TOUR DETAILS

Register for this meeting right now!



Click here to be automatically directed to the registration website.

Date: Wednesday, January 23, 2008

Location: 11450 Broomfield Lane
Broomfield, Colorado 80021

Time: 6:00pm

DIRECTIONS?

CLICK HERE



Cost: FREE

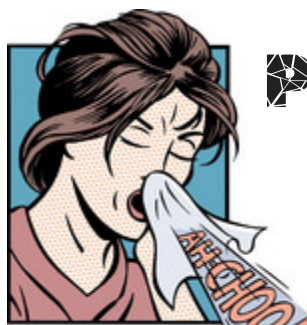
Deadline for RSVP is Monday, January 21

Wisdom,

Wonders,

and

Wit



Photic

Sneeze

Reflex

EDUCATION INFORMATION

Photometrics Online Seminar

Jan. 7 – Feb. 11, 2008

Learn how to speak the language of lighting system performance to enable better design, application, and comparison of lighting systems.

The Lighting Education Institute is offering a six-week immersion course covering the essential aspects of luminaire photometry for architects, engineers, interior designers, lighting designers, sales reps, manufacturers, and related professionals. Content includes both interior and exterior luminaire photometry and focuses on the practical use and interpretation of photometric reports.

The course, taught by Craig A. Bernecker, director of the Institute, consists of a weekly 90 minute web seminar covering these topics. The weekly web seminars will be supplemented by a dedicated course management website which includes weekly lessons, resources and “assignments,” interactive forums and chat sessions, and archiving of the web seminars for review or if you miss the live seminar. For further information Contact: lightingeducation.com, or call 610-524-7969, or email lei@lightingeducation.com.

Photic sneeze reflex is a medical condition by which people sneeze with sudden exposure to bright light, and possibly also sneeze many times consecutively. It is also referred to as photic sneeze response, sun sneezing, photogenic sneezing, the photosternutatory reflex, being photo sensitive, or even whimsically as ACHOO syndrome with its related backronym Autosomal dominant Compelling Helio-Ophthalmic Outburst syndrome. The condition occurs in 17% to 35% of humans. The condition is passed along genetically as an autosomal dominant trait. People who sun-sneeze tend to assume everyone does, and people who don't sun-sneeze have often never even considered the possibility.

The first mention of the phenomenon is probably in the later work attributed to Aristotle (Problems, book XXXIII). The probable cause is a congenital malfunction in nerve signals in the trigeminal nerve nuclei. The fifth cranial nerve, called the trigeminal nerve, is apparently responsible for sneezes. Research suggests that some people have an association between this nerve and the nerve that transmits visual impulses to the brain. Overstimulation of the optic nerve triggers the trigeminal nerve, and this causes the photic sneeze reflex (persons familiar with data cable insulation issues would understand this undesigned stimulus as "crosstalk").

Another theory suggests that tears leaking into the nose through the nasolacrimal duct are a cause of the photic sneeze reflex. The speed of the reflex seems to favor the first theory, as it happens much too quickly for tears to be generated and drain into the nose. In addition this sneeze reflex can be brought on by a sudden inhaling of cold air or a strong flavour such as a strong mint gum. This implies an overstimulation of any nerve close to the trigeminal nerve can cause the sneeze reflex.

While this phenomenon is poorly understood, recent research has shown that antihistamines being used to treat rhinitis due to seasonal allergies may also reduce the occurrence of solar sneezes in those people suffering from both conditions.

Tabletop Opportunities for February Section Meeting

With the upcoming section meeting in February covering LED Technology, we are offering the opportunity for

manufacturers, vendors, and representatives to showcase their LED products. Tabletop space will be available to a

limited number of participants to show off their latest technology, products and services.

Please send an inquiry e-mail expressing your interest to info@iesrms.org.

An IES Board Member will then contact you to arrange for your space.

Remember, space is limited for this February 12 event, so be sure to request your table immediately!



Note from the IIDA Chair

Dear Friends,

The IIDA program has been in existence for well over 30 years and it has become the most prestigious lighting awards program in the world. The world has looked at the IIDA program as representative of what is good and technologically advanced in the field of lighting.

The IIDA is the most diverse and all-encompassing program in the world and has created a rich history observing the work of lighting designers. The IIDA Program is one of the most important and visible programs in the IESNA. It recognizes the fruition of all the Society's research, development, and education. Its purpose is not only to recognize the excellence in lighting design, but also to educate by example.

You have an opportunity to participate to participate right here in your Rocky Mountain IES Section. Nomination forms are now available on line at www.iesna.org. The following credit cards are now accepted MasterCard, Visa, and American Express. Please remember that each nomination has to be submitted separately, each with it's own CD and narrative, each with it's own nomination form, and entry fee.

Please submit on time, IIDA nominations received after the deadline of January 14, 2008 will not be judged.

Leo Mendoza,
Section IIDA Chair

Holiday Lights Tour Canceled

Many asked if we would be rescheduling our Holiday Lights tour that was scheduled for December 11. Unfortunately, the weather did not allow for us to re-schedule this highly anticipated event. However, we had great cooperation from the City and County of Denver and the Downtown Denver Partnership, so we plan on offering this tour early in December next year. Thanks again to all who were so supportive and excited about this event, and stay tuned next year!

Important IIDA Dates and Deadlines

January 14, 2008 IIDA project entries and \$25.00 fee (One check per entry) due at Section level.

Send your nominations to:

Leo Mendoza, IIDA Chair
Creative Illumination Inc.
1298 S. Kalamath Street
Denver, CO 80223

January 26, 2008 Section judging completed and all projects qualifying for further judging are due to the Regional Chair. Under separate cover, all nomination forms entered in your section (with entry fee attached) are due to the IESNA office.



February 11, 2008 Qualifying entries due to IIDA Committee, at:
IESNA
120 Wall Street
17th Floor
New York, N.Y.
10005-4001

Broomfield Event Center

Facility Tour

January 23

Join us as we tour the new Broomfield Event Center and explore the lighting and electrical details of the newest sporting venue in the Rocky Mountains.

2007-2008 Upcoming Section Events

All About Lighting Controls

Original Brooklyn's

May 13

With answers to everybody's questions, manufacturers provide demonstrations of everything from sensors, relays and photocells, to daylighting controls and architectural and theatrical lighting products. A must see meeting!

LED Expo

Original Brooklyn's

February 12

Join us as we invite manufacturers to bring you the latest products and technologies in the LED industry along with demonstrations and discussions on the industry.

Lighting Forensics

Original Brooklyn's

March 11

We explore in depth design considerations when working in dark spaces, parking garages, secure facilities, and detention centers with a presentation by a leader in the field.

2008 Golf Tournament

Raccoon Creek Golf Club

June 13

Our annual golf tournament returns again at the Raccoon Creek Golf Club! More games, fun, and prizes are scheduled for this year's tournament!



The Holidays aren't over yet at the Denver Botanic Gardens

The holiday spirit lives on into the new year as the Denver Botanic Gardens hosts its 19th annual Blossoms of Light.

Dates:
through January 20, 2008

Times:
6-9 p.m. (last ticket sold at 8:30)

Prices:
\$9 Adults
\$6 Youth (age 4-15)
\$7 Seniors (65+)

\$1 each for HoloSpex 3-D Glasses

Denver Botanic Gardens turns into a winter wonderland as it is blanketed in dazzling holiday lights which highlight the natural beauty of the Gardens.

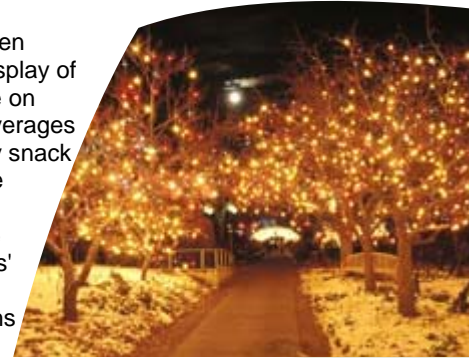
Over one million colorful lights draped in elegant designs will illuminate the plants and hardscapes throughout a new path at the Gardens. A variety of entertainment will be held each evening in the All-America Selections Garden outdoor heated tent, Mitchell Hall and also strolling around the Gardens.

See the sparkling lights magically transformed into shimmering snowflakes through the lenses of 3-D HoloSpex glasses.

Many new features have been added to this year's spectacle, including waterlily sculptures that will illuminate the Monet Garden Horseshoe Pool. Additionally, some of the 26 sculptures from the *Living Bronze Sculptures by Robert Wick* exhibit will be lighted and will incorporate elaborate seasonal plantings. Light Emitting Diode (LED) lighting will be introduced to the display this year, with energy-saving displays in the

Water-Smart Garden and Woodland Mosaic, highlighting the Gardens' commitment to conservation and sustainability. LED lights use 80% less energy than normal lights.

Indoors in Gates Garden Court, a captivating display of seasonal plants will be on display. Piping hot beverages will accompany savory snack offerings. There will be several food stations located throughout the Gardens. The Gardens' Conservatory will be closed during Blossoms of Light.



IESNA NEEDS YOU!

We are looking for additional volunteers to assist us with our section activities, education programs and board of managers. Please contact us today if you would like to volunteer some of your time and skills for the July 2008 to June 2009 season.

Contact:

Mike Rogers, LC, LEED-AP
Rocky Mountain Section Membership Chairman &
Nominating Committee Chairman
mike@iesrms.org

Newsletter Advertising Space Available!

E-mail us to request our one-page flyer promoting the newly available advertising space in the *Rocky Mountain Monthly*, the newsletter of the Rocky Mountain section of the IESNA.



With close to 1,000 trade-specific readers, you can't miss out on this opportunity to endorse your services and products! E-mail us at info@iesrms.org for details.

Section Officers

President	Jim Blakley
Vice President	Tyler Wise
Secretary	Nancy Johnson
Treasurer	Val Lawrence

Board of Managers

Awards Chairman	Jeff Kramer
IIDA Awards Chairman	Leo Mendoza
Membership Chairman	Mike Rogers
Past President	Marla Stauth
Committee Members	David Keith, Scott Payne

